



# MASON FS Jack up floor Installation sequence



## Set out mount locations

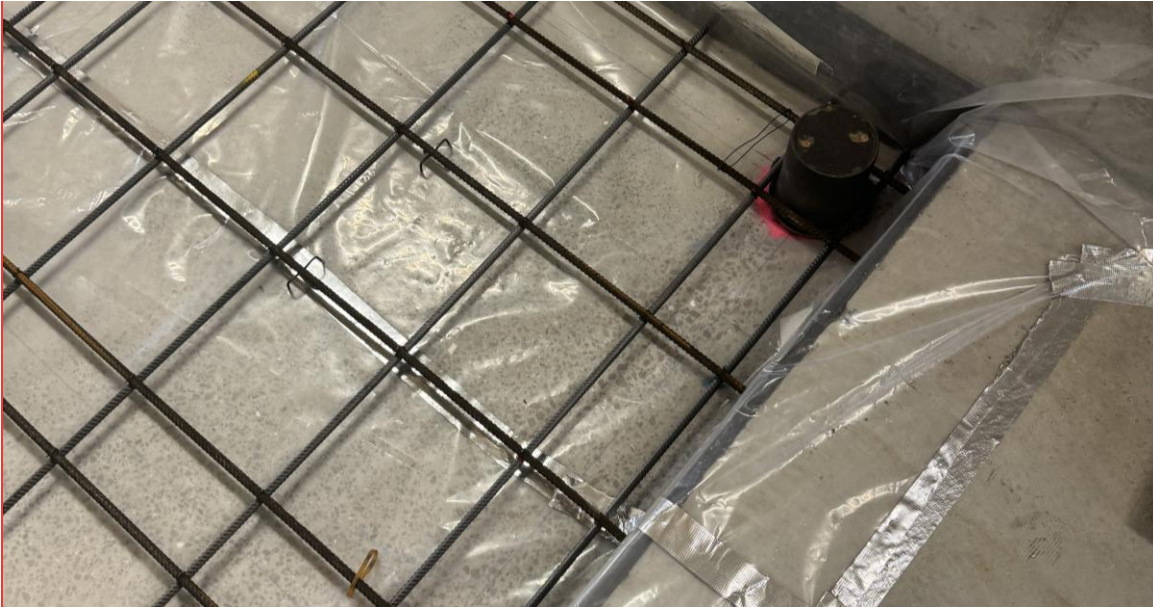
- / Mason supplied engineered layout drawing.
- / Mark mount locations on structural slab.
- / Take note of any clashes with penetrations.



# Install Perimeter Foam or edge form

- / Supplied by Mason.
- / Install to perimeter and all penetrations.
- / Install lateral pads (if required)
- / Seal around any penetrations.





## Install Bond Breaker

- / Supplied by Mason.
- / Bond breaker installed.
- / Lap and tape joints.
- / Seal any penetrations.
- / No Bondek needed.
- / Structural slab acts as formwork for acoustic slab.





A 3x7 grid of dots, consisting of 3 rows and 7 columns of small black dots.

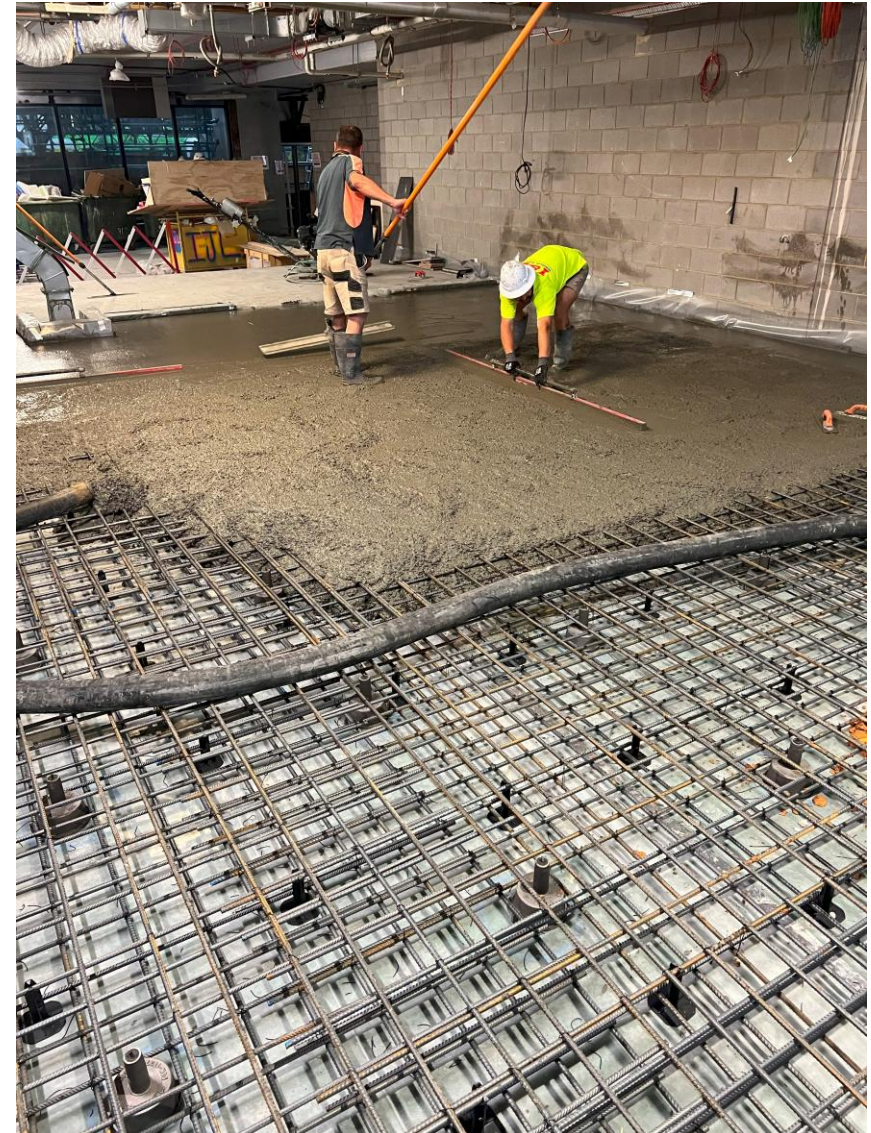
- [illegible]





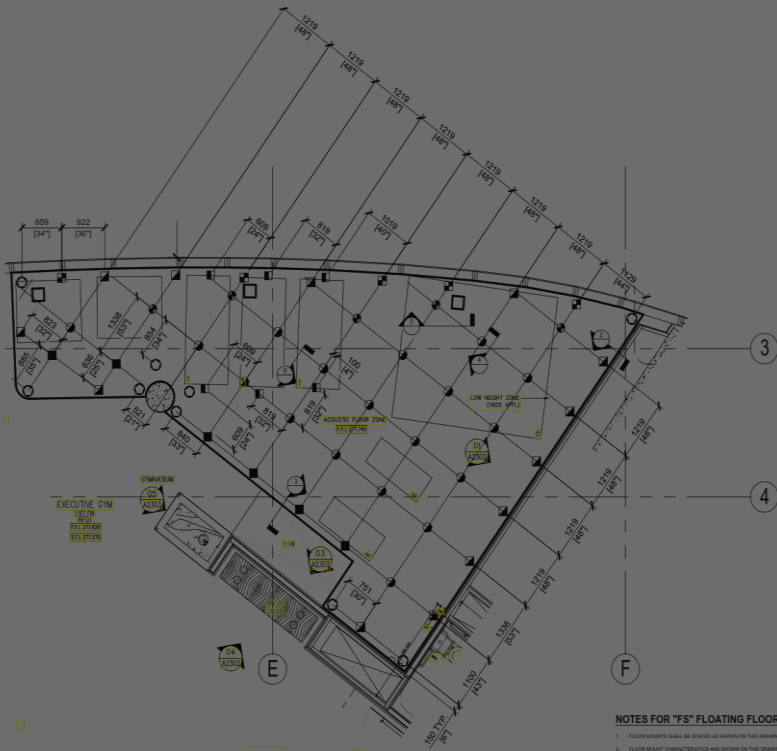
# Pour Concrete Slab

/ Screed to top of FS housing.



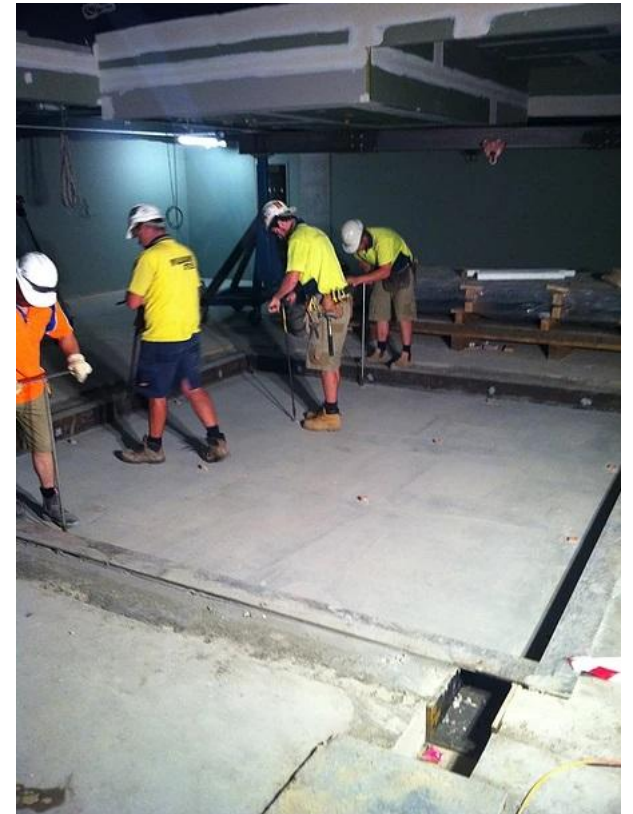
# Install Springs into Housings

- Remove cover plate.
- Install spring inside housing.





# Jack up Concrete Floor



- / Mason supplied jacking keys.
- / Mason project manager to provide jacking supervision if required.
- / Integrated jacking bolt is turned 2 clockwise turns per pass.
- / Jack slab to documented height (typically 50mm)
- / Typically, 2-300m<sup>2</sup> can be jacked up by a team of 4 men per day dependant on spring deflection and air space.

.  
. .  
. .  
. .  
. .  
. .  
. .

. . . . .  
. . . . .

# Video Overview

[CLICK HERE](#)

A decorative graphic consisting of a 5x5 grid of small red dots in the top-left corner of the slide.

# Contact

**Mason Mercer**

---

info@masonmercer.com.au

masonmercer.com.au

1800-0-MASON

A decorative graphic consisting of a 5x5 grid of small white dots in the bottom-right corner of the slide.