



## MASON INDUSTRIES, Inc.

Manufacturers of Vibration Control Products

350 Rabro Drive 2101 W. Crescent Ave., Suite D  
Hauppauge, NY 11788 Anaheim, CA 92801  
631/348-0282 714/535-2727  
FAX 631/348-0279 FAX 714/535-5738  
Info@Mason-Ind.com Info@MasonAnaheim.com

## Installation Instructions For MT Air Springs

DATE: 02-12-20

DRAWING NO.

1. Block up base or equipment to operating height as shown on the drawings.
2. Set MT air spring mounts under bracket or equipment base with the 1/4" NPT threaded nipple at the bottom facing out. Bolt to the bracket or equipment base.
3. See drawing \_\_\_\_\_ for the typical layout of the leveling valves. Leveling valve # 1 must be attached to the equipment so the black air supply and exhaust lever is perpendicular to the length of the equipment while leveling valves # 2 & 3 must have the black levers parallel to the length of the equipment (See drawing S-302).
4. Attach the valves to the equipment base with miscellaneous steel as required. Valves must be attached to the floor and equipment base. (See drawing S-302) Install the valves so the black air supply and exhaust lever is 1/4" (6mm) above level when it attaches to the turnbuckles.
5. Install piping as shown on \_\_\_\_\_.
6. Open air and check for leaks.
7. The equipment should have risen 1/4" (6mm) off the blocking. If not, increase the length of the turnbuckle on the leveling mount connected to that mount.
8. Check the equipment for level and adjust as required by turning the turnbuckles. Increasing the length of the turnbuckles raises the equipment and decreasing the length lowers the equipment.
9. After the equipment is level, turn down the locknut on the turnbuckle to hold the adjustment.
10. Install down-stops if provided.

DWN:	CHKD:	DATE:
------	-------	-------



# MASON INDUSTRIES, Inc.

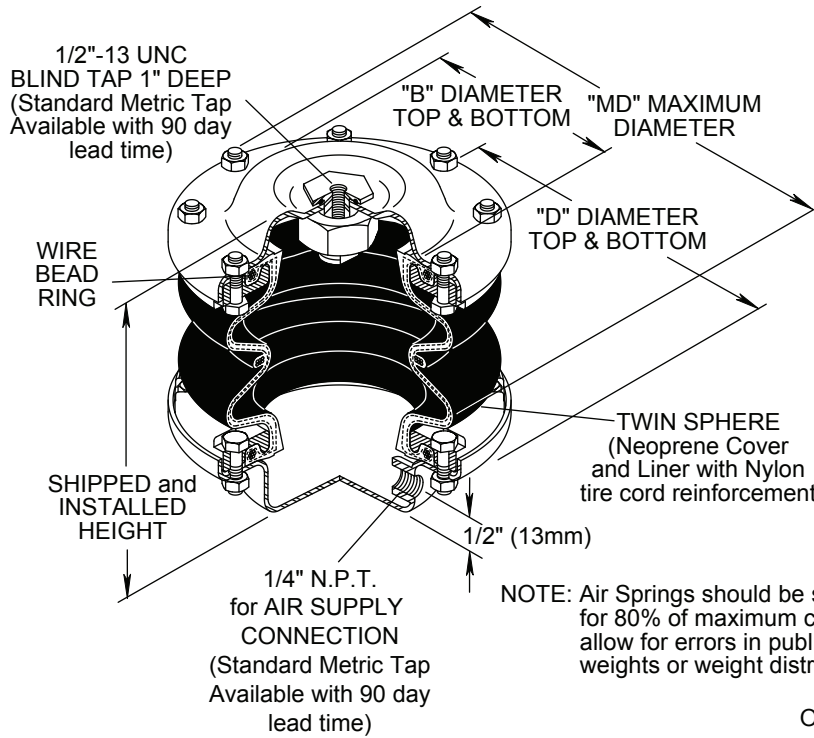
Manufacturers of Vibration Control Products

350 Rabro Drive 2101 W. Crescent Ave., Suite D  
 Hauppauge, NY 11788 Anaheim, CA 92801  
 631/348-0282 714/535-2727  
 FAX 631/348-0279 FAX 714/535-5738  
 Info@Mason-Ind.com Info@MasonAnaheim.com  
 www.Mason-Ind.com

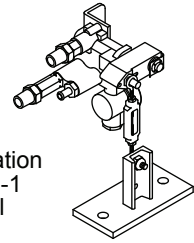
JOB NAME \_\_\_\_\_  
 CUSTOMER \_\_\_\_\_  
 CUSTOMER P.O. \_\_\_\_\_  
 MASON M.I. \_\_\_\_\_  
 DWG. NO. \_\_\_\_\_

# MT

**TWIN SPHERE  
 AIR SPRINGS**

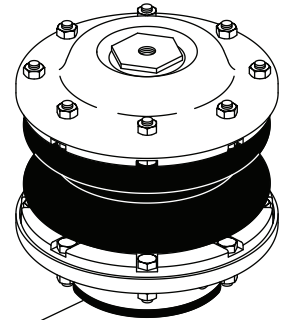


All Air Spring Systems must be installed with Leveling Valves and Air Supply Systems.



See Certification Sheet S-302-1 for additional information

**CAUTION:** Never inflate Air Springs prior to installation.



NOTE: Air Springs should be selected for 80% of maximum capacity to allow for errors in published weights or weight distribution.

OPTIONAL 1/4" (6mm) FRICTION PAD ON BOTTOM

NOTE: Frequency based on shape of load deflection curve

### TYPE MT DIMENSIONS (inches)

Size	Shipped & Installed Height	B	D	MD
MT-3	7 1/4	3 3/4	6	6 1/2
MT-4	7 1/4	4 3/4	7 1/4	7 3/4
MT-6	7 1/4	7	9 3/4	10 1/2
MT-8	7 1/4	8 7/8	12	12 1/2

### TYPE MT RATINGS

Size	Min Load @ 10 psi (lbs)	Max Recommended Load @ 80 psi (lbs)	Max Load @ 100 psi (lbs)	Approximate Frequency CPM Hertz
MT-3	138	1100	1375	138 2.3
MT-4	215	1720	2150	120 2.0
MT-6	470	3760	4700	108 1.8
MT-8	848	6780	8475	102 1.8

### TYPE MT DIMENSIONS (mm)

Size	Shipped & Installed Height	B	D	MD
MT-3	184	95	152	165
MT-4	184	121	184	197
MT-6	184	178	248	267
MT-8	184	225	305	318

### TYPE MT METRIC RATINGS

Size	Min. Load @ 0.7kg/cm <sup>2</sup> (kgs)	Max. Recommended Load @ 5.6kg/cm <sup>2</sup> (kgs)	Max Load @ 7kg/cm <sup>2</sup> (kgs)	Approximate Frequency CPM Hertz
MT-3	63	500	625	138 2.3
MT-4	98	781	977	120 2.0
MT-6	214	1708	2136	108 1.8
MT-8	386	3081	3852	102 1.8

### PLAN VIEW OF MOUNT LOCATIONS

TAG : \_\_\_\_\_  
 UNIT : \_\_\_\_\_



1 :	6 :
2 :	7 :
3 :	8 :
4 :	9 :
5 :	10 :
Sets Required:	



# MASON INDUSTRIES, Inc.

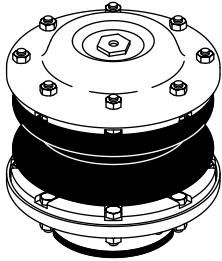
Manufacturers of Vibration Control Products  
 350 Rabro Drive 2101 W. Crescent Ave., Suite D  
 Hauppauge, NY 11788 Anaheim, CA 92801  
 631/348-0282 714/535-2727  
 FAX 631/348-0279 FAX 714/535-5738  
 Info@Mason-Ind.com Info@MasonAnaheim.com  
 www.Mason-Ind.com

JOB NAME \_\_\_\_\_  
 CUSTOMER \_\_\_\_\_  
 CUSTOMER P.O. \_\_\_\_\_  
 MASON M.I. \_\_\_\_\_  
 DWG. NO. \_\_\_\_\_

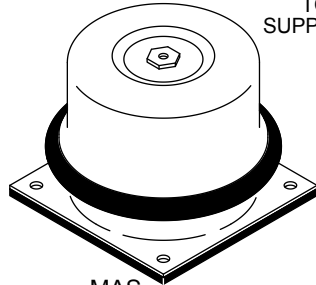
## LEVELING VALVE

### AIR SPRING ASSEMBLY

Air Springs must be installed with Leveling Valves and Air Supply Systems.

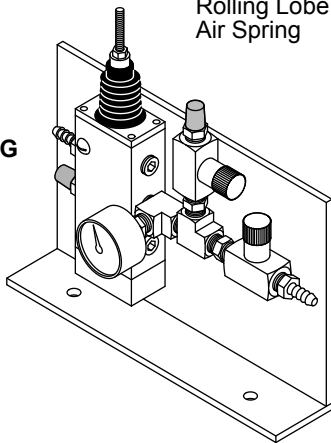


MT  
Twin Sphere  
Air Spring



MAS  
Rolling Lobe  
Air Spring

**MICRO  
LEVELING  
SYSTEM  
VALVE**



TO AIR SPRING  
SUPPLY & EXHAUST  
CONNECTION  
1/4" NPT

AIR SUPPLY  
(BY OTHERS)  
100 psi (7 kg/cm<sup>2</sup>)

EXHAUST TO  
ATMOSPHERE

EQUIPMENT  
MOUNTING  
BRACKET

AIR SUPPLY  
AND EXHAUST  
LEVER  
(neutral  
when level)

CL OF ROTARY  
VALVE  
MECHANISM

SELF  
LOCKING  
NUT

LENGTHEN BUCKLE  
TO INCREASE HEIGHT.  
ACCURACY ±1/8" (3mm)

If equipment loses elevation by  
1/8" (3mm), Valve supplies air.

If equipment lifts 1/8" (3mm),  
Valve exhausts air.

SELF  
LOCKING  
NUT

FLOOR  
MOUNTING  
PLATE

See Cert Sheets S-300, S-301, S-303  
S-278 & S-279 For Additional Information

