



MASON INDUSTRIES, Inc.

Manufacturers of Vibration Control Products

350 Rabro Drive 2101 W. Crescent Ave., Suite D
Hauppauge, NY 11788 Anaheim, CA 92801
631/348-0282 714/535-2727
FAX 631/348-0279 FAX 714/535-5738
Info@Mason-Ind.com Info@MasonAnaheim.com

Installation Instructions

For MAS Air Springs

DATE: 02-12-20

DRAWING NO.

1. Block up base or equipment to operating height as shown on the drawings.
2. Set MAS air spring mounts under bracket or equipment base with the 1/4" NPT threaded nipple at the bottom facing out. Bolt to the bracket or equipment base.
3. See drawing _____ for the typical layout of the leveling valves. Leveling valve # 1 must be attached to the equipment so the black air supply and exhaust lever is perpendicular to the length of the equipment while leveling valves # 2 & 3 must have the black levers parallel to the length of the equipment (See drawing S-302).
4. Attach the valves to the equipment base with miscellaneous steel as required. Valves must be attached to the floor and equipment base. (See drawing S-302) Install the valves so the black air supply and exhaust lever is 1/4" (6mm) above level when it attaches to the turnbuckles.
5. Install piping as shown on _____.
6. Open air and check for leaks.
7. The equipment should have risen 1/4" (6mm) off the blocking. If not, increase the length of the turnbuckle on the leveling mount connected to that mount.
8. Check the equipment for level and adjust as required by turning the turnbuckles. Increasing the length of the turnbuckles raises the equipment and decreasing the length lowers the equipment.
9. After the equipment is level, turn down the locknut on the turnbuckle to hold the adjustment.
10. Install down-stops if provided.

DWN:

CHKD:

DATE:



MASON INDUSTRIES, Inc.

Manufacturers of Vibration Control Products
 350 Rabro Drive 2101 W. Crescent Ave., Suite D
 Hauppauge, NY 11788 Anaheim, CA 92801
 631/348-0282 714/535-2727
 FAX 631/348-0279 FAX 714/535-5738
 Info@Mason-Ind.com Info@MasonAnaheim.com
 www.Mason-Ind.com

JOB NAME _____
 CUSTOMER _____
 CUSTOMER P.O. _____
 MASON M.I. _____
 DWG. NO. _____

MAS

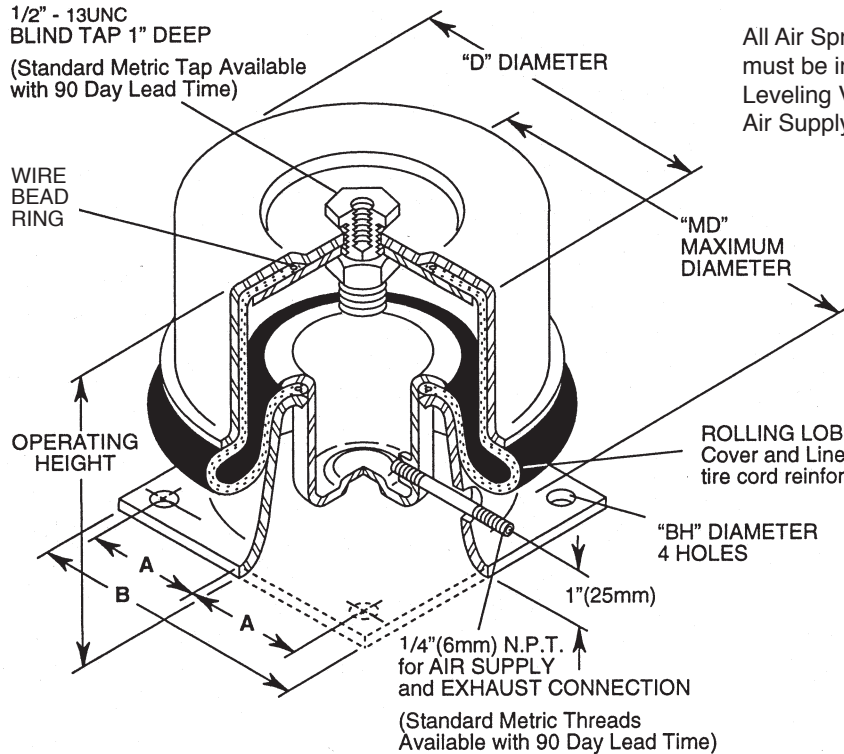
Rolling Lobe
Air Springs

1/2" - 13UNC
BLIND TAP 1" DEEP

(Standard Metric Tap Available
with 90 Day Lead Time)

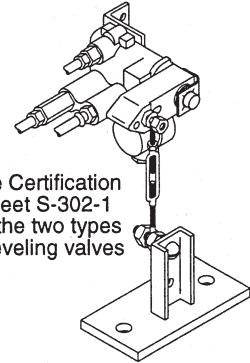
WIRE
BEAD
RING

OPERATING
HEIGHT

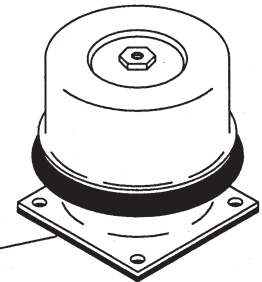


All Air Spring Systems
must be installed with
Leveling Valves and
Air Supply Systems.

See Certification
Sheet S-302-1
for the two types
of leveling valves



ROLLING LOBE (Neoprene
Cover and Liner with Nylon
tire cord reinforcement)



OPTIONAL
1/4" (6mm)
FRICTION PAD
ON BOTTOM

**NOTE: Frequency
based on shape of
load deflection curve.**

MAS DIMENSIONS

Size	Operating Height (in)	A (in)	B (in)	D (in)	BH (in)	MD (in)
MAS-3000	8 1/4	2 1/2	6 1/8	6	1 1/32	7 1/4
MAS-6800	8 1/4	3 5/8	8 5/8	9	1 1/32	10 1/2
MAS-12000	8 1/4	4 3/4	11 1/2	12	1 5/32	14

MAS RATINGS

Size	Min Load at 10 psi (lbs)	Max Recommended Load at 80 psi (lbs)	Max Load at 100 psi (lbs)	APPROXIMATE FREQUENCY CPM	Hz
MAS-3000	300	2400	3000	84	1.4
MAS-6800	680	5440	6800	84	1.4
MAS-12000	1200	9600	12000	78	1.4

MAS METRIC DIMENSIONS

Size	Operating Height (mm)	A (mm)	B (mm)	D (mm)	BH (mm)	MD (mm)
MAS-3000	209	64	156	152	9	184
MAS-6800	209	92	219	229	9	267
MAS-12000	209	121	292	305	12	356

MAS METRIC RATINGS

Size	Min Load at 0.704kg/cm ² (kgs)	Max Recommended Load at 5.63kg/cm ² (kgs)	Max Load at 7.04kg/cm ² (kgs)	APPROXIMATE FREQUENCY CPM	Hz
MAS-3000	136	1088	1360	84	1.4
MAS-6800	309	2472	3090	84	1.4
MAS-12000	545	4360	5455	78	1.4

PLAN VIEW OF MOUNT LOCATIONS

TAG : _____

UNIT : _____



1 :	6 :
2 :	7 :
3 :	8 :
4 :	9 :
5 :	10 :
Sets Required:	



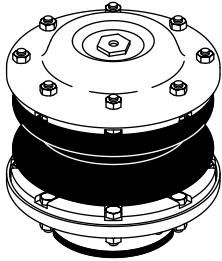
MASON INDUSTRIES, Inc.

Manufacturers of Vibration Control Products
 350 Rabro Drive 2101 W. Crescent Ave., Suite D
 Hauppauge, NY 11788 Anaheim, CA 92801
 631/348-0282 714/535-2727
 FAX 631/348-0279 FAX 714/535-5738
 Info@Mason-Ind.com Info@MasonAnaheim.com
 www.Mason-Ind.com

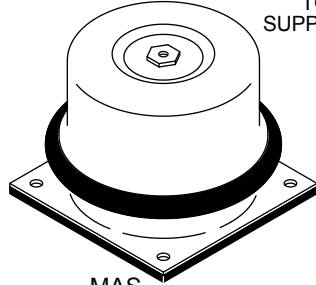
JOB NAME _____
 CUSTOMER _____
 CUSTOMER P.O. _____
 MASON M.I. _____
 DWG. NO. _____

LEVELING VALVE AIR SPRING ASSEMBLY

Air Springs must be installed with Leveling Valves and Air Supply Systems.

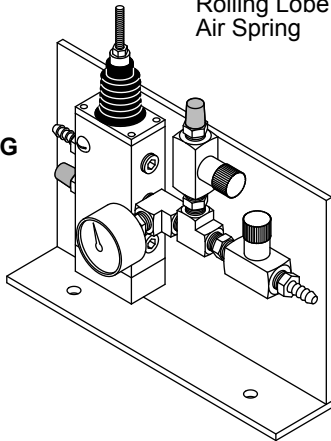


MT
Twin Sphere
Air Spring



MAS
Rolling Lobe
Air Spring

MICRO LEVELING SYSTEM VALVE



TO AIR SPRING
SUPPLY & EXHAUST
CONNECTION
1/4" NPT

AIR SUPPLY
(BY OTHERS)
100 psi (7 kg/cm²)

EXHAUST TO
ATMOSPHERE

EQUIPMENT
MOUNTING
BRACKET

AIR SUPPLY
AND EXHAUST
LEVER
(neutral
when level)

CL OF ROTARY
VALVE
MECHANISM

SELF
LOCKING
NUT

LENGTHEN BUCKLE
TO INCREASE HEIGHT.
ACCURACY ±1/8" (3mm)

If equipment loses elevation by
1/8" (3mm), Valve supplies air.

If equipment lifts 1/8" (3mm),
Valve exhausts air.

SELF
LOCKING
NUT

FLOOR
MOUNTING
PLATE

See Cert Sheets S-300, S-301, S-303
S-278 & S-279 For Additional Information

