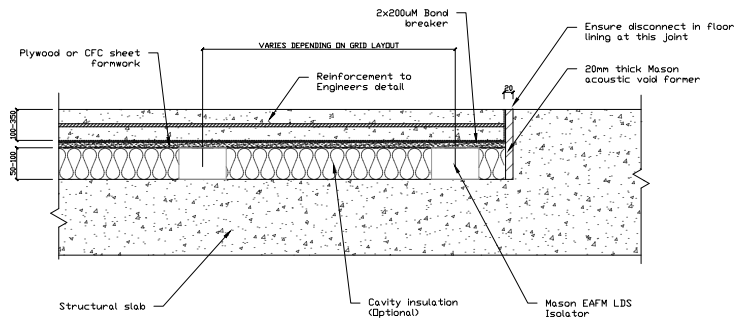
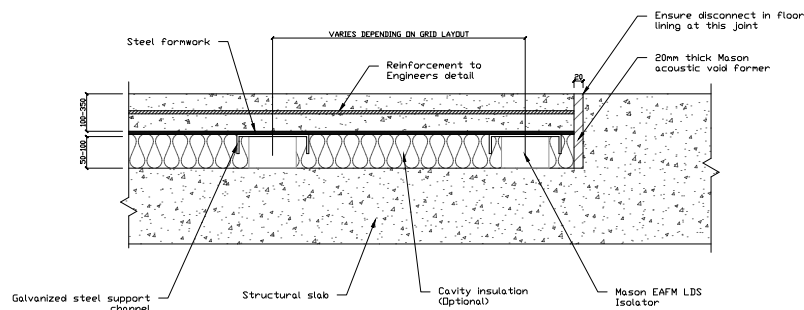


Notes:

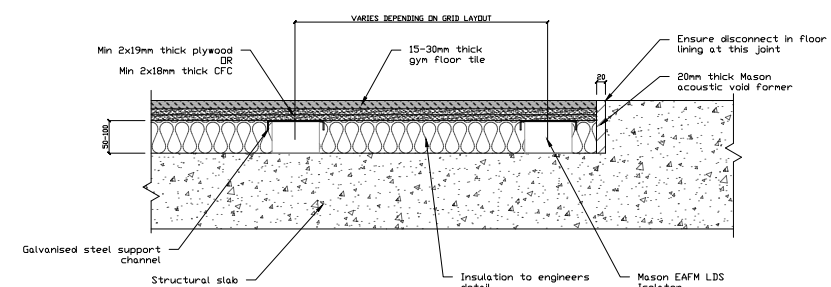
- NOTES
1. THIS DRAWING MAY NOT BE REPRODUCED IN WHOLE OR PART OR USED FOR THE MANUFACTURE OF ANY ARTICLE WITHOUT THE EXPRESS PERMISSION OF THE COPYRIGHT HOLDERS.
 2. WORK TO FIGURED DIMENSIONS ONLY.
 3. THIS DRAWING IS TO BE READ IN CONJUNCTION WITH ALL RELEVANT ARCHITECT'S, SERVICE ENGINEER'S DRAWINGS AND SPECIFICATIONS.



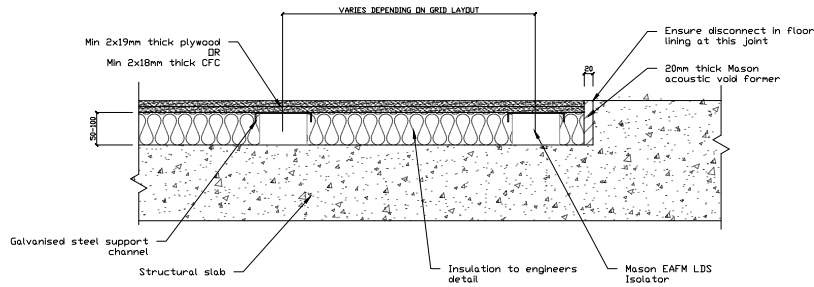
LWFF 01 TYPICAL DETAIL - EAFM LDS FLOATING FLOOR
NTS - With Plywood or CFC Formwork



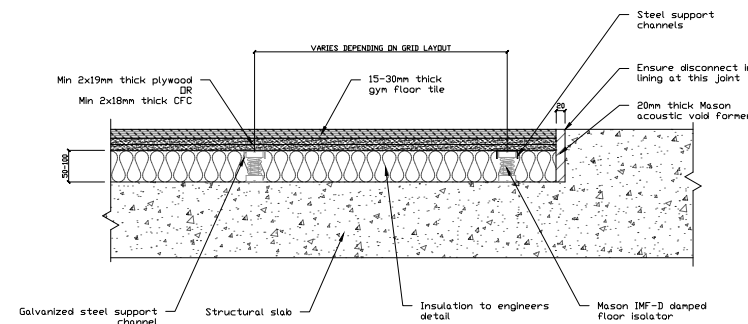
LWFF 02 TYPICAL DETAIL - RUBBER FLOATING FLOOR
NTS - With Steel Formwork



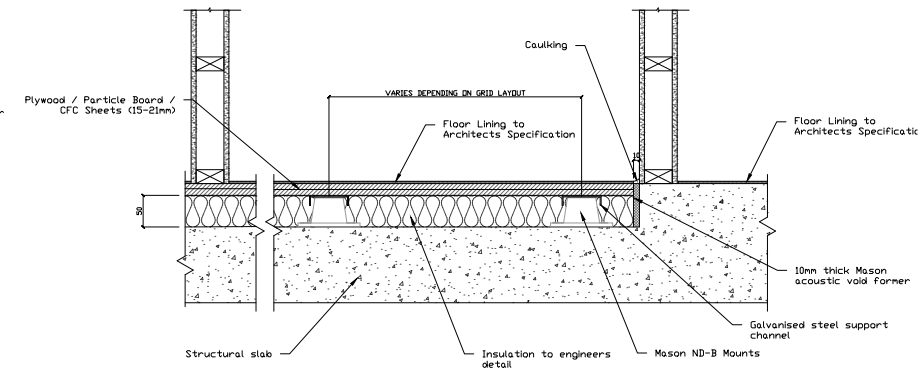
LWFF 03 TYPICAL DETAIL - RUBBER GYM FLOOR
NTS - Lightweight Floor



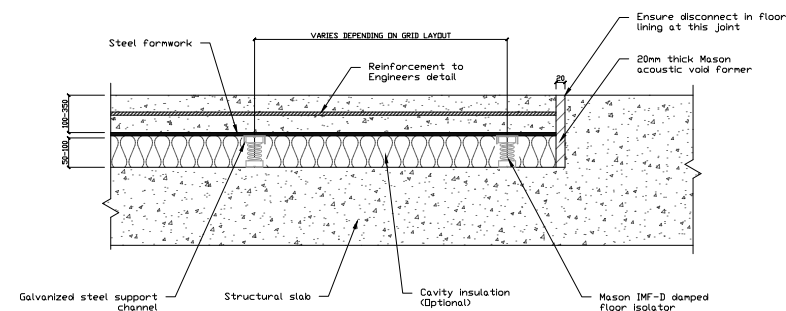
LWFF 04 TYPICAL DETAIL - EAFM FLOATING FLOOR
NTS - Lightweight Floor



LWFF 05 TYPICAL DETAIL - SPRING GYM FLOOR
NTS - Lightweight Floor



LWFF 06 TYPICAL DETAIL - ND-B Mount Floor with Internal Wall
NTS - Lightweight Floor



LWFF 07 TYPICAL DETAIL - SPRING FLOATING FLOOR
NTS - With Steel Formwork

A	DETAILS	CY	20/09/2021
REV:	DESCRIPTION:	BY:	DATE:
STATUS: TYPICAL DETAILS			



Mason Mercer
 30 Chaffey Street
 Thomastown, VIC 3074
 Australia
 Email: info@masonmercercor.com.au
 Phone: 1800-0-MASON
 www.masonmercercor.com.au

SITE:	Typical Details		
TITLE:	FLOATING FLOORS		
SCALE: AT A1:	DATE:	DRAWN:	CHECKED:
NTS	20/09/2021	CY	JW
PROJECT NO:	DRAWING NO:	REVISION:	
NA	TYP-04	A	