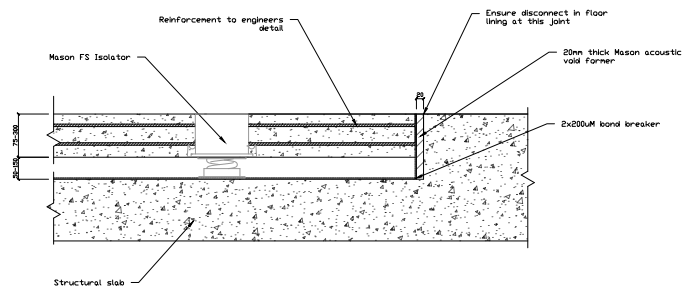
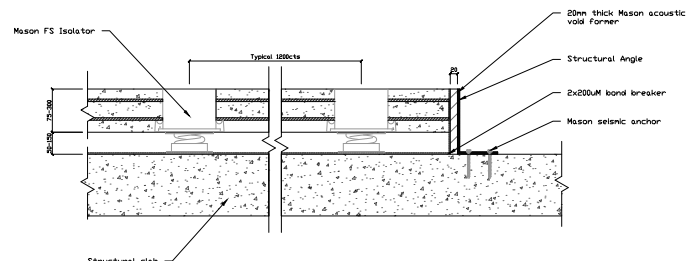


Notes:

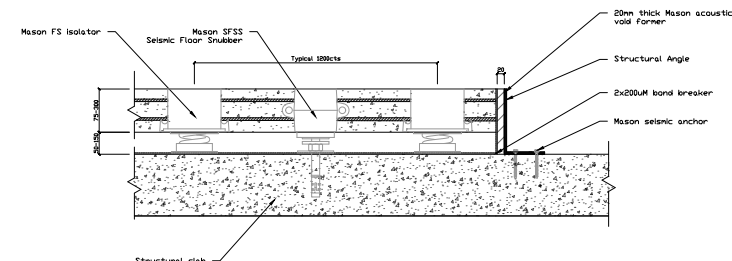
- NOTES
1. THIS DRAWING MAY NOT BE REPRODUCED IN WHOLE OR PART OR USED FOR THE MANUFACTURE OF ANY ARTICLE WITHOUT THE EXPRESS PERMISSION OF THE COPYRIGHT HOLDERS.
 2. WORK TO FIGURED DIMENSIONS ONLY.
 3. THIS DRAWING IS TO BE READ IN CONJUNCTION WITH ALL RELEVANT ARCHITECT'S, SERVICE ENGINEER'S DRAWINGS AND SPECIFICATIONS.



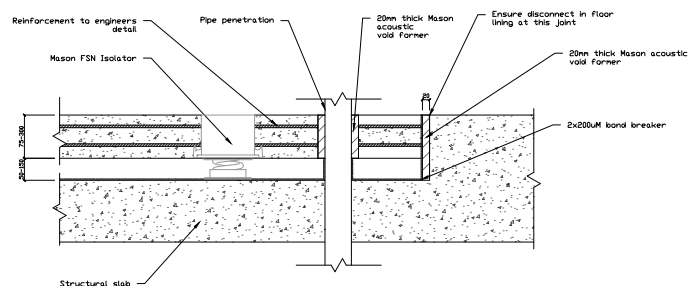
FS 01 TYPICAL DETAIL - FS SPRING JACK UP FLOOR
NTS



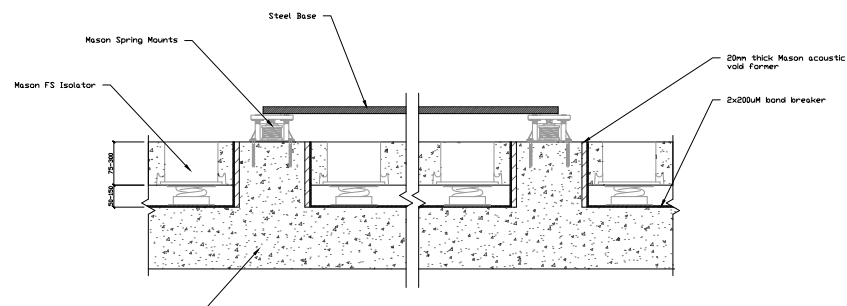
FS 02 TYPICAL DETAIL - FS SPRING JACK UP FLOOR ALT HOB
NTS



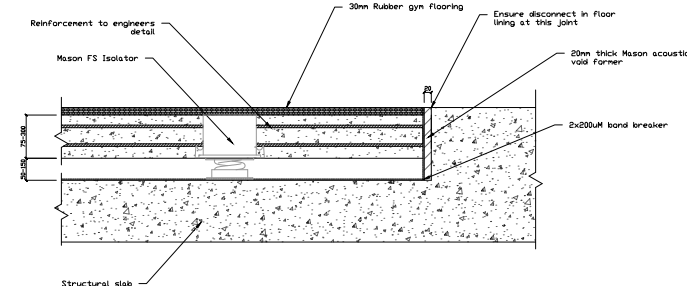
FS 03 TYPICAL DETAIL - FS SPRING JACK UP FLOOR ALT HOB
NTS - With Seismic Restraint



FS 04 TYPICAL DETAIL - FS SPRING JACK UP FLOOR
NTS - With Pipe Penetration



FS 05 TYPICAL DETAIL - FS SPRING JACK UP FLOOR ALT HOB
NTS - With Equipment Plinths



FS 06 TYPICAL DETAIL - FS SPRING JACK UP FLOOR
NTS - With Gym Flooring

A	DETAILS	CY	27/05/2020
REV:	DESCRIPTION:	BY:	DATE:
STATUS: TYPICAL DETAILS			



30 Chaffey Street
 Thomastown, VIC 3074
 Australia
 Email: info@masonmercer.com.au
 Phone: 1800-0-MASON
 www.masonmercer.com.au

SITE: Typical Details			
TITLE: FS SPRING JACK UP FLOOR			
SCALE AT A1: NTS	DATE: 27/05/2020	DRAWN: CY	CHECKED: JW
PROJECT NO: NA	DRAWING NO: TYP-03	REVISION: A	