

A decorative graphic consisting of a grid of red dots, arranged in 5 rows and 6 columns, positioned above the main title.

**MASON FSN Jack up floor
Installation sequence**



Set out mount locations

- / Mason supplied engineered layout drawing.
- / Mark mount locations on structural slab.
- / Take note of any clashes with penetrations.





Install Perimeter **Foam** or edge form

- / Supplied by Mason.
- / Install to perimeter and all penetrations.
- / Tape joints.
- / Seal around any penetrations.





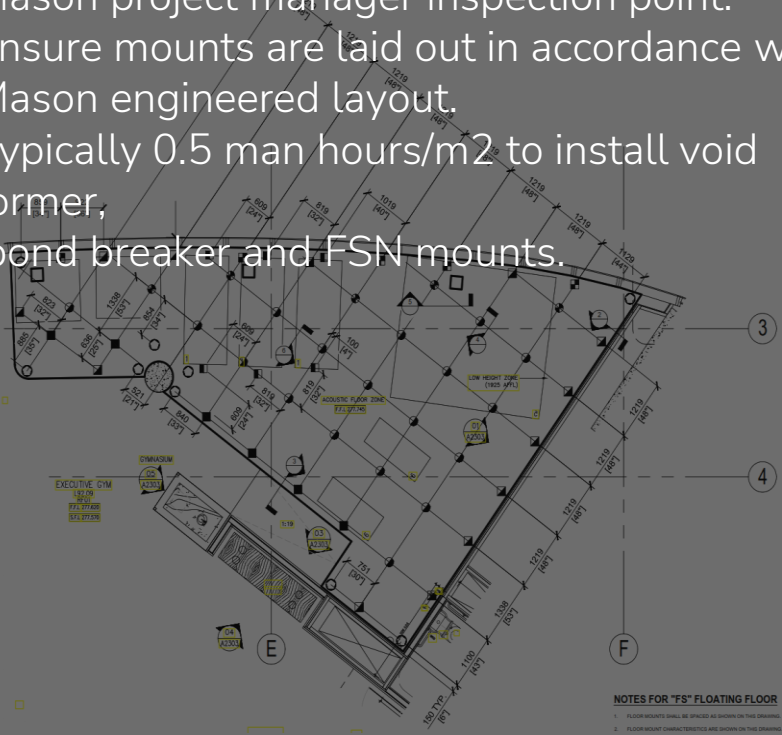
Install Bond Breaker

- / Supplied by Mason.
- / Bond breaker installed.
- / Lap and tape joints.
- / Seal any penetrations.
- / No Bondek needed.
- / Structural slab acts as formwork for acoustic slab.



Install FSN Housings to Mason Layout Drawings

- ✓ Supplied by Mason.
- ✓ Mason project manager inspection point.
- ✓ Ensure mounts are laid out in accordance with Mason engineered layout.
- ✓ Typically 0.5 man hours/m² to install void former, bond breaker and FSN mounts.



NOTES FOR "FS" FLOATING FLOOR
 1. FLOOR MOUNTS SHALL BE SPACED AS SHOWN ON THIS DRAWING.
 2. FLOOR MOUNT CHARACTERISTICS ARE SHOWN ON THIS DRAWING.



Tie-off Reinforcement

- / Ensure mesh or bar is fixed to support lugs on housing.
- / Reinforcement to Mason or project engineer's details.
- / Mason project manager inspection prior to pour.

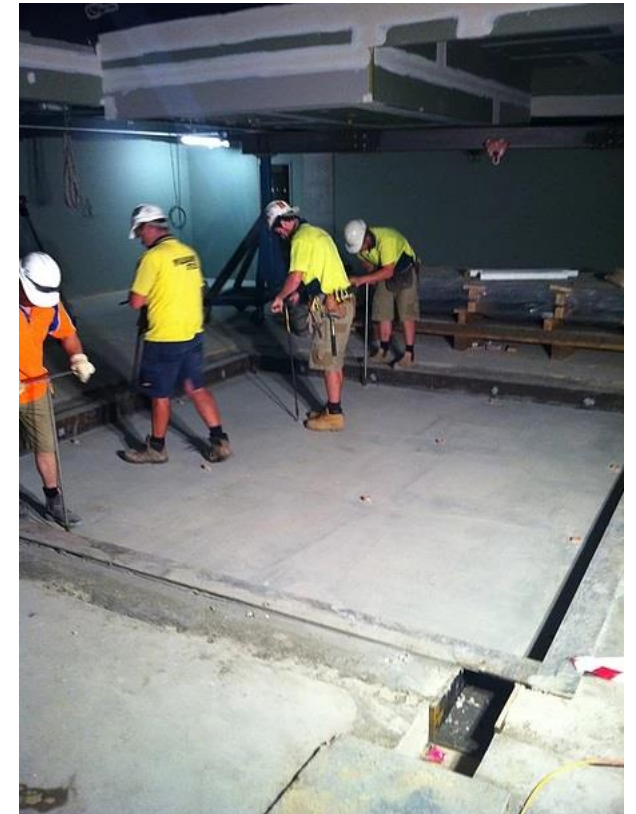


Pour Concrete Slab

- / Screed to top of FSN housing.
- / Ensure rubber location plugs are visible.



Jack up Concrete Floor



- / Mason supplied jacking keys.
- / Mason project manager to provide jacking supervision if required.
- / Integrated jacking bolt is turned 2 clockwise turns per pass.
- / Jack slab to documented height (typically 50mm)
- / Typically 4-500m² can be jacked up by a team of 5 men per day.

Video Overview



[CLICK HERE](#)

A decorative graphic consisting of a grid of small red dots in the top-left corner of the page.

Contact

Mason Mercer

info@masonmercerc.com.au

masonmercerc.com.au

1800-0-MASON

A decorative graphic consisting of a grid of small white dots in the bottom-right corner of the page.