

A decorative graphic consisting of a grid of small red dots, arranged in approximately 5 rows and 10 columns, positioned to the left of the main title.

MASON FS Jack up floor Installation sequence



Set out mount locations

- ! Mason supplied engineered layout drawing.
- ! Mark mount locations on structural slab.
- ! Take note of any clashes with penetrations.





Install Perimeter **Foam** or edge form

- / Supplied by Mason.
- / Install to perimeter and all penetrations.
- / Tape joints.
- / Seal around any penetrations.





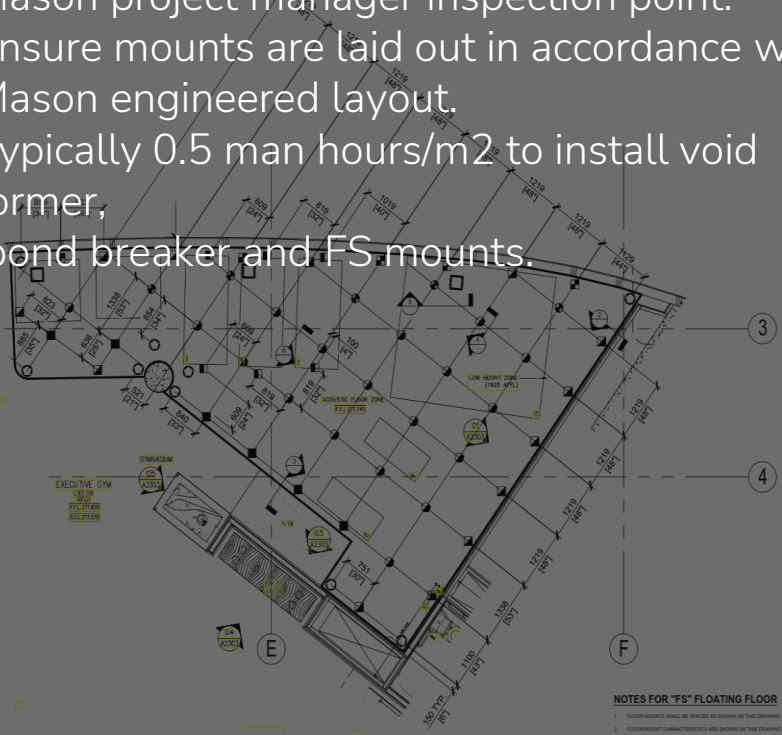
Install Bond Breaker

- / Supplied by Mason.
- / Bond breaker installed.
- / Lap and tape joints.
- / Seal any penetrations.
- / No Bondek needed.
- / Structural slab acts as formwork for acoustic slab.



Install FS Housings to Mason Layout Drawings

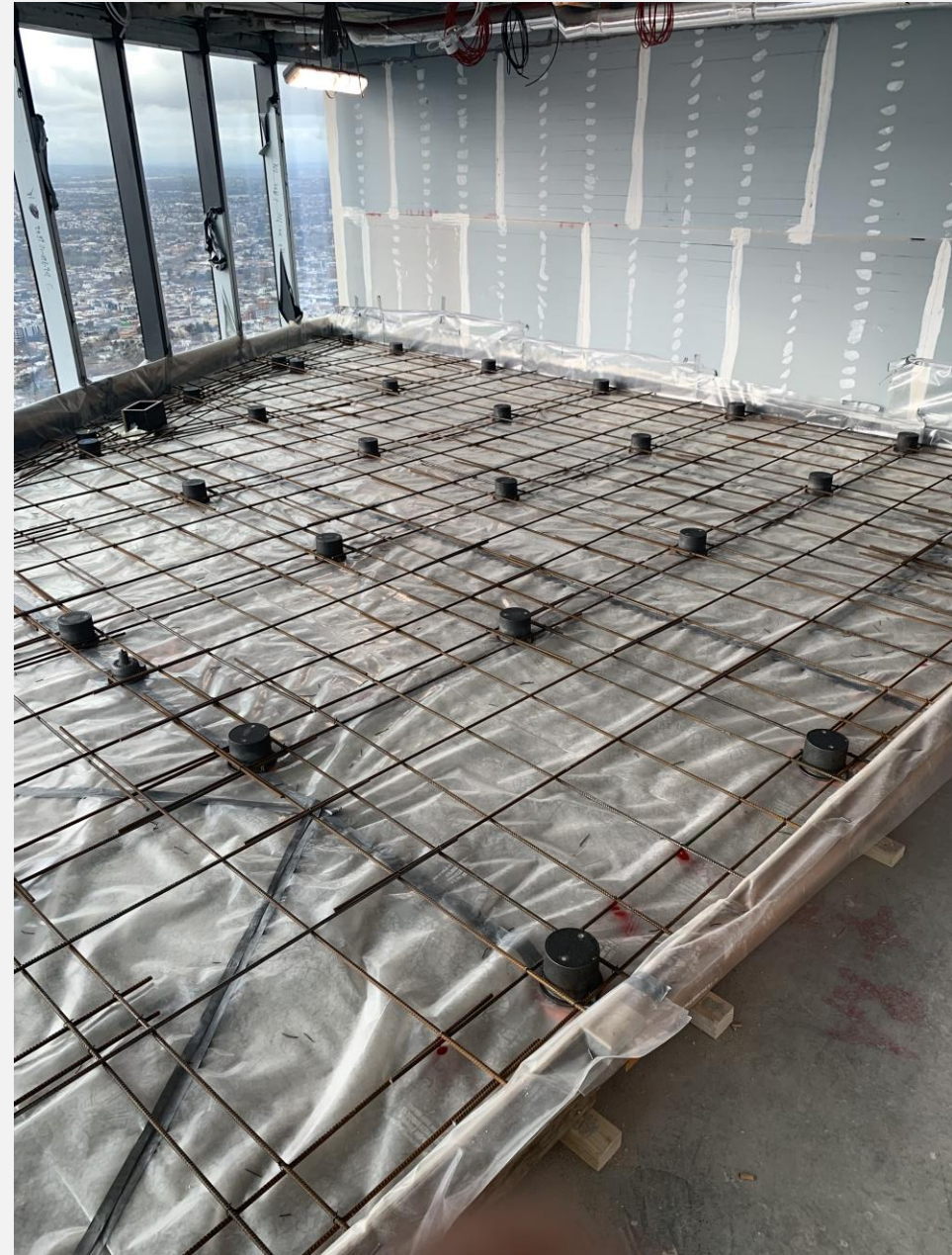
- ! Supplied by Mason.
- ! Mason project manager inspection point.
- ! Ensure mounts are laid out in accordance with Mason engineered layout.
- ! Typically 0.5 man hours/m² to install void former, bond breaker and FS mounts.





Tie-off Reinforcement

- / Ensure mesh or bar is fixed to support lugs on housing.
- / Reinforcement to Project Engineer's details.
- / Mason project manager inspection prior to pour.



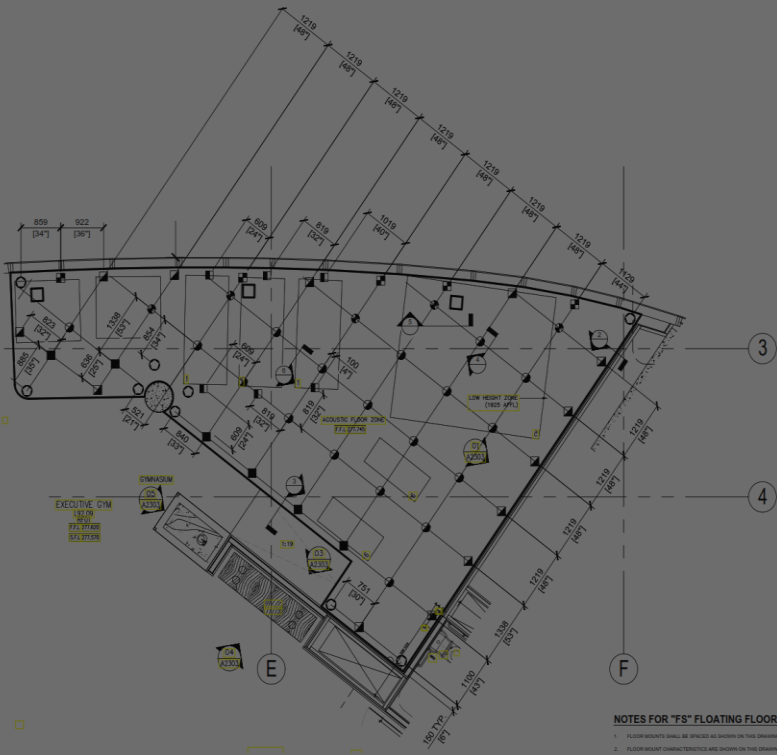
Pour Concrete Slab

- / Screed to top of FS housing.

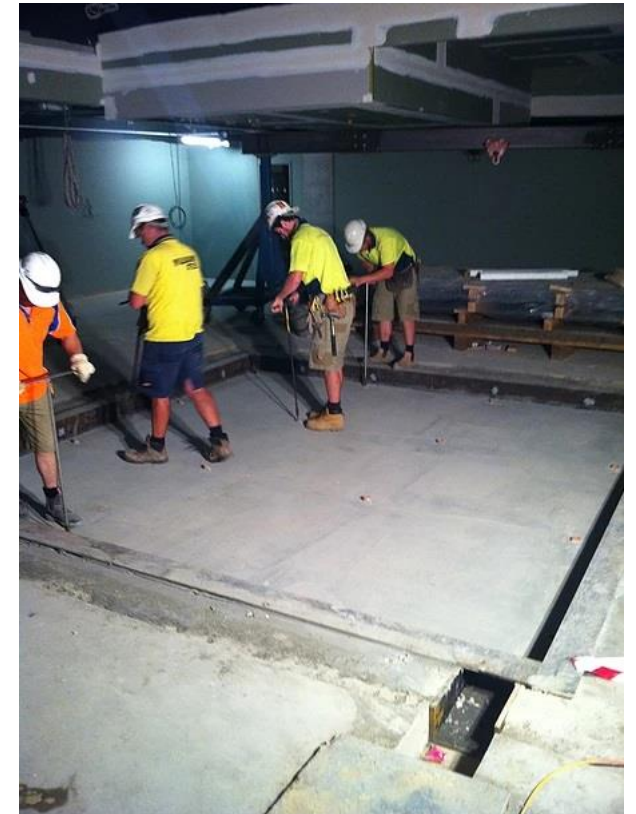


Install Springs into Housings

- Remove cover plate.
- Install spring inside housing.



Jack up Concrete Floor



- / Mason supplied jacking keys.
- / Mason project manager to provide jacking supervision if required.
- / Integrated jacking bolt is turned 2 clockwise turns per pass.
- / Jack slab to documented height (typically 50mm)
- / Typically 4-500m² can be jacked up by a team of 5 men per day.

Video **Overview**



[CLICK HERE](#)

A decorative graphic consisting of a grid of small red dots in the top-left corner of the page.

Contact

Mason Mercer

info@masonmercerc.com.au

masonmercerc.com.au

1800-0-MASON

A decorative graphic consisting of a grid of small white dots in the bottom-right corner of the page.