

SEISMIC SWAY BRACE SYSTEM SWAY BRACE ANCHORS

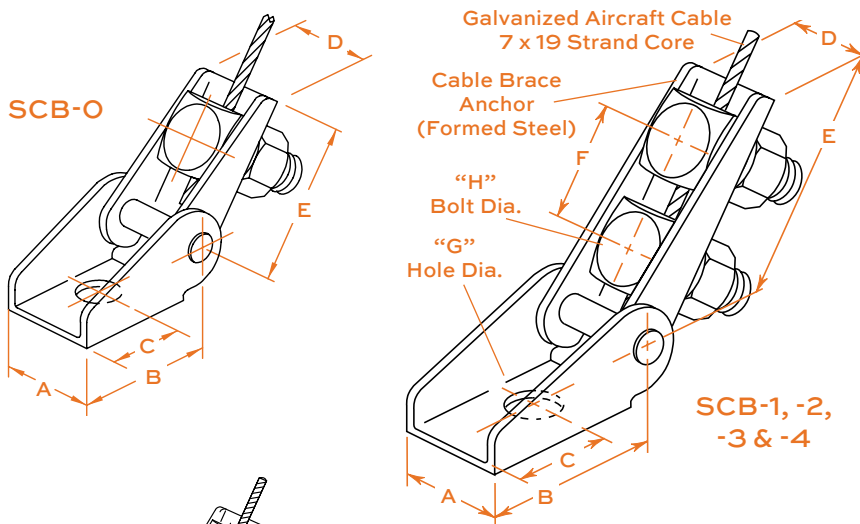
**SCB, SSBS,
SSB, SCBH
& SCBV**

Seismic Sway Brace System

Through the use of aircraft cable with swivel anchors, piping, ductwork, and suspended equipment, the Seismic Sway Brace System can be safely prevented from swinging out of control during earthquakes or when exposed to wind.

Cable braces are designed so when they are installed with sufficient slack, they do not interfere with neoprene or spring isolator function but effectively control movement, preventing equipment detachment and excessive damage.

SCB- Seismic Cable Brace Swivel Anchor with All Parts Electro-Galvanized

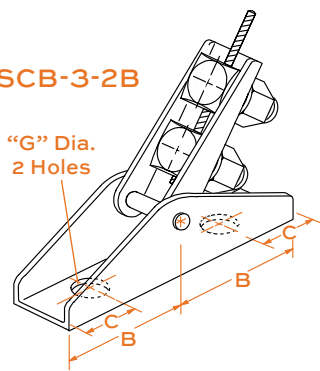


TYPE SCB ASSEMBLY RATINGS as Controlled by Cable Break Strength*

Type	Size	Cable Diameter (in) (mm)	OSHPD Max. Ratings (lb) (kg)
SCB-	0	1/16" 1.6	235 107
	0	3/32" 2.4	460 209
	0	3/32 2.4	500 227
	1	1/8 3.0	975 442
	2	3/16 4.5	2050 930
	3 & -3-2B	1/4 6.0	3150 1429
	4	3/8 9.0	6875 3118

*7 x 7 Strand Core

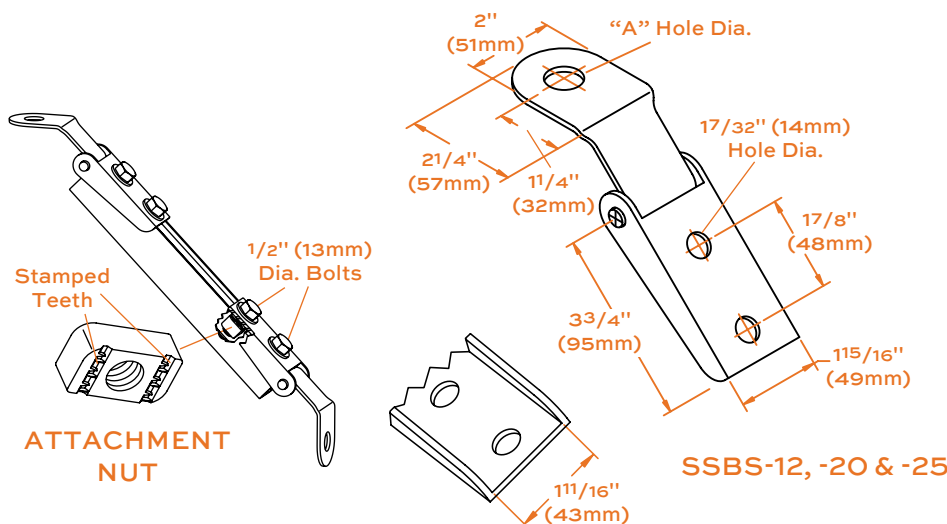
SCB-3-2B



TYPE SCB ANCHOR DIMENSIONS

Type	Size	A (mm)		B (mm)		C (mm)		D (mm)		E (mm)		F (mm)		G (mm)		H (mm)	
SCB-	0	15/16	33	11/2	38	3/4	19	15/16	24	13/4	44	—	—	7/16	13	1/2	13
	1	13/8	35	2	51	1	25	15/16	24	33/8	86	11/2	38	9/16	14	1/2	13
	2	13/8	41	23/4	70	13/8	35	13/16	30	43/8	111	13/4	44	11/16	17	5/8	16
	3	2	51	31/2	89	13/4	41	17/16	37	43/4	121	2	51	13/16	21	3/4	19
	3-2B	2	51	43/4	121	1	25	17/16	37	43/4	121	2	51	13/16	21	3/4	19
	4	31/8	79	5	127	21/2	64	115/16	49	53/4	146	21/4	57	15/16	33	1	25

SSBS- Seismic Solid Brace Strut Anchor



TYPE SSBS RATINGS

OSHPD Rated Capacity ¹ (lb) (kg)	Torque on 1/2" (13mm) Diameter Bolt (ft-lb) (N-M)	
	3000 1365	50 68

¹Attachment nuts must have stamped teeth to achieve these values.

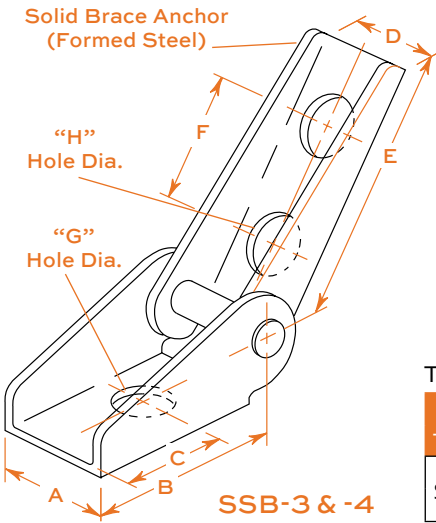
TYPE SSBS DIMENSIONS

Type	Size	A (mm)		For Rod Sizes (lb) (kg)	
SSBS-	12	17/32	13	3/8 & 1/2	9 & 13
	20	25/32	20	5/8 & 3/4	16 & 19
	25	11/32	26	7/8 & 1	22 & 25

Finish: All parts are Zinc Electroplated.

SSB- Seismic Solid Brace Swivel Anchor with All Parts Electro-Galvanized.
Angle or Channel is substituted for Cable.

Swivel ended anchors simplify installations as braces do not have to be cut to exact length. The anchor will swivel to provide solid anchorage when bolting.



TYPE SSB ANCHOR RATINGS*

Type	Size	OSHPD Max. Ratings	
		(lb)	(kg)
SSB-	3	5000	2268
	4	8750	3967

* Ratings are from test data and calculations used to obtain California OSHPD Preapproval Number OPA-0349. Testing was supervised and certified by an independent engineer registered in the state of California.

Ratings are based on attachment to steel.

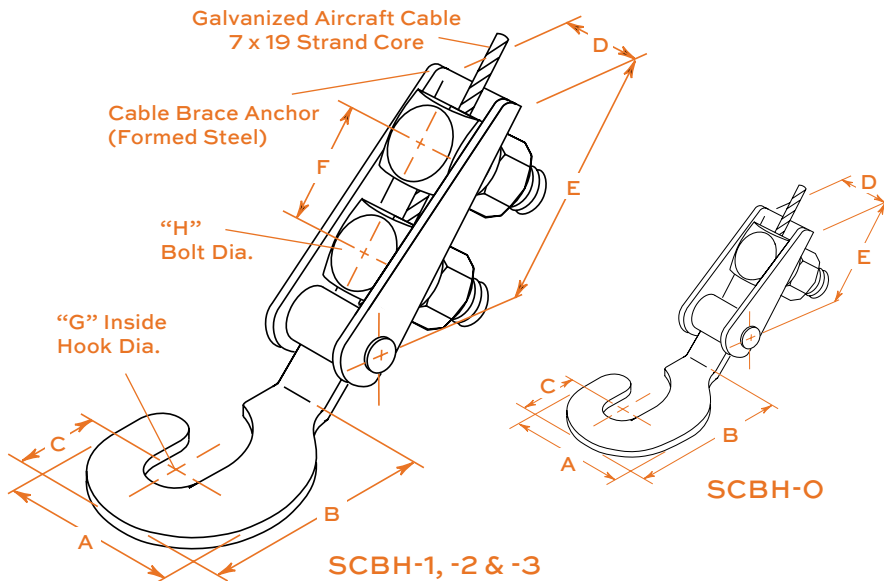
Ratings will be controlled by attachment methods to concrete.

TYPE SSB ANCHOR DIMENSIONS

Type	Size	A		B		C		D		E		F		G		H	
		(in)	(mm)	(in)	(mm)	(in)	(mm)	(in)	(mm)	(in)	(mm)	(in)	(mm)	(in)	(mm)	(in)	(mm)
SCB-	3	2	51	3 1/2	89	1 3/4	41	1 7/16	37	4 3/4	121	2	51	1 3/16	21	9/16	14
	4	3 1/8	79	5	127	2 1/2	64	1 15/16	49	5 3/4	146	2 1/4	57	1 5/16	33	1 1/16	17

SCBH- Seismic Cable Brace Hook Anchor & Assembly

Cables can only be used in tension so a hook does not slide off. A hooked end provides for quick attachment to hanger rods without removing clevis bolts or trapeze rods.



TYPE SCBH ASSEMBLY RATINGS
as Controlled by Cable Break Strength*

Type	Size	Cable Diameter		OSHPD Max. Ratings	
		(in)	(mm)	(lb)	(kg)
SCBH-	0	1/16*	1.6	235	107
	0	3/32*	2.4	460	209
	0	3/32	2.4	500	227
	1	1/8	3.0	975	442
	2	3/16	4.5	2050	930
	3	1/4	6.0	3150	1429

*7 x 7 Strand Core

Ratings are from test data and calculations used to obtain California OSHPD Preapproval Number OPA-0349. Testing was supervised and certified by an independent engineer registered in the state of California.

Ratings are based on attachment to steel.

SCBH assemblies will fit rod sizes as tabulated.

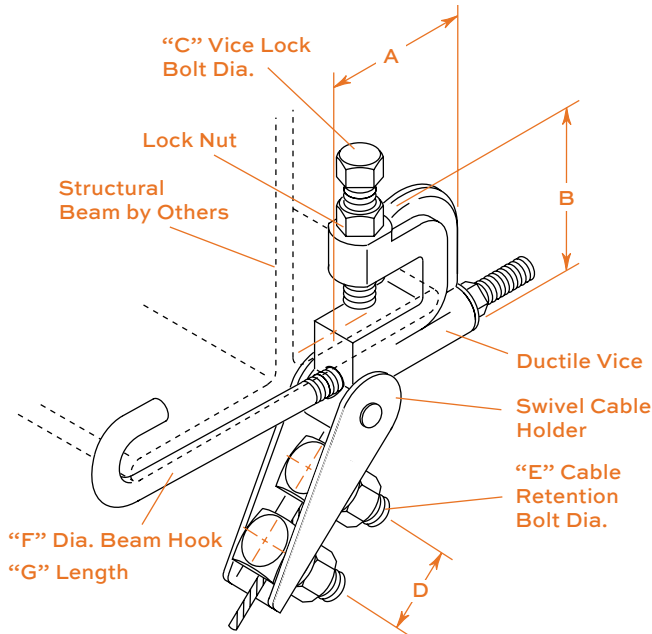
Preferred installation angle is 45°. Maximum variation ±15°.

TYPE SCBH ANCHOR DIMENSIONS

Type	Size	For Use with Rod Sizes		A		B		C		D		E		F		G		H	
		(in)	(mm)	(in)	(mm)	(in)	(mm)	(in)	(mm)	(in)	(mm)	(in)	(mm)	(in)	(mm)	(in)	(mm)	(in)	(mm)
SCBH-	0	3/8	10	1 3/8	35	2 1/16	52	1 1/16	17	1 5/16	24	1 3/4	44	—	—	3/8	10	1/2	13
	1	1/2, 5/8	13, 16	1 7/8	48	2 3/8	60	1	25	1	25	3 3/8	86	1 1/2	38	5/8	16	1/2	13
	2	3/4, 7/8	19, 22	2 7/8	73	3 3/4	95	1 3/8	35	1 3/16	30	4 3/8	111	1 3/4	44	7/8	22	5/8	16
	3	1, 1 1/8	25, 28	3 1/2	89	4 3/4	121	1 3/4	44	1 7/16	37	4 3/4	121	2	51	1 1/8	29	3/4	19

SCBV- Seismic Cable Brace Vise Anchor & Assembly

The SCBV can be used with either an SCB or SCBH on the other end. Clamping to beam flanges eliminates drilling or welding and generally presents a cost savings.



NOTE: Not to be used as a vertical hanger for equipment, ductwork or piping. To be used as a seismic restraint only.

TYPE SCBV ASSEMBLY RATINGS as Controlled by Cable Break Strength

Type	Size	Cable Diameter		OSHPD Max. Ratings	
		(in)	(mm)	(lb)	(kg)
SCBV-	1	1/8	3.0	975	442
	2	3/16	4.5	2050	930
	3	1/4	6.0	3150	1429

Ratings are from test data and calculations used to obtain California OSHPD Preapproval Number OPA-0349. Testing was supervised and certified by an independent engineer registered in the state of California.

Ratings are based on attachment to steel.

SCBV assemblies will fit beam flanges as tabulated.

Preferred installation angle is 45°. Maximum variation ±15°.

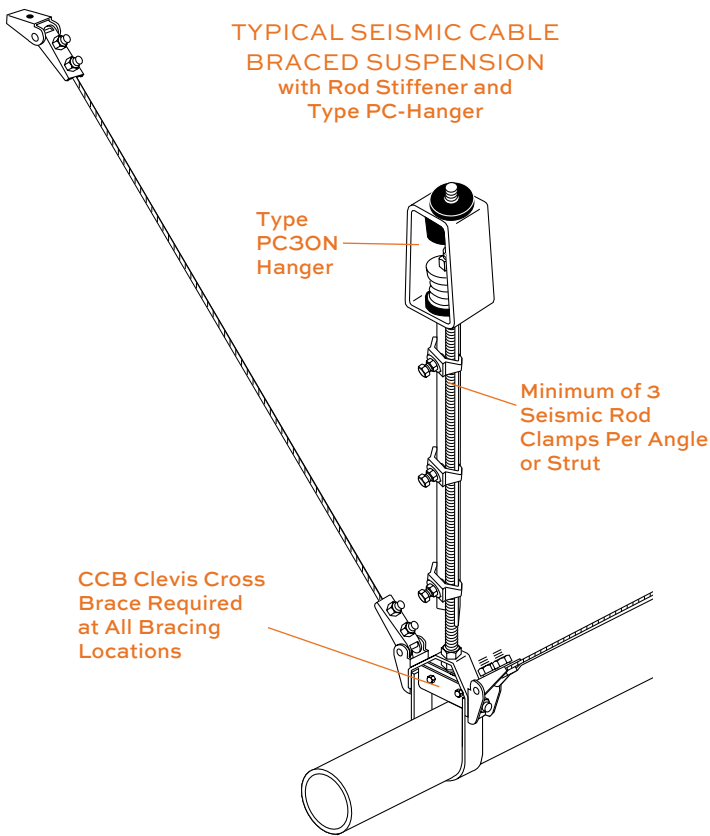
TYPE SCBV ANCHOR DIMENSIONS

Type	Size	Vice Jaw						A	B	C	D	E	F	G	Beam Flange Width Range								
		Width		Clearance		Depth									(in)	(mm)	(in)	(mm)	(in)	(mm)	(in)	(mm)	
SCBV-	1	11/16	17	11/16	17	15/16	33	17/8	48	23/8	60	7/16	11	11/2	38	1/2	13	3/8	9	10	254	3 1/2 - 8 1/2	89 - 216
	2	7/8	22	11/16	27	11/16	27	27/8	73	3	76	1/2	13	13/8	44	5/8	16	3/8	9	12	305	3 1/2 - 10	89 - 254
	3	11/16	27	11/8	29	115/16	49	33/8	86	33/4	95	5/8	16	2	51	3/4	19	1/2	13	12	305	4 - 9 1/2	102 - 241

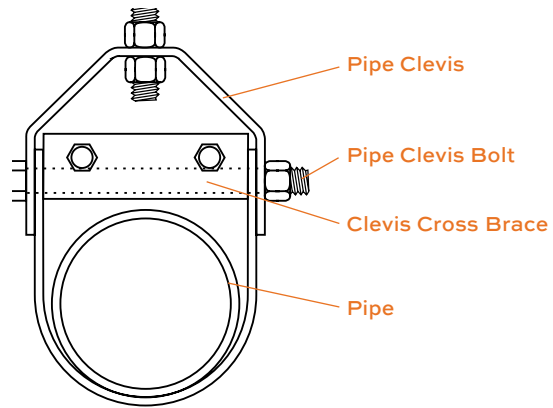
SEISMIC SWAY BRACE SYSTEM SCBA ASSEMBLY

**SRC, UC
& CCB**

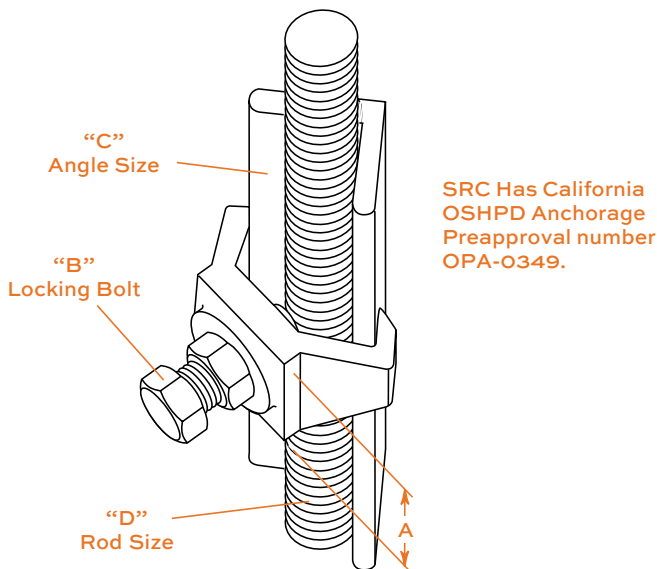
SCBA Assembly– Two SCB Swivel Anchors Attached to Galvanized Aircraft Cable 7 x 19 Strand Core



Controlling sway is frequently not enough to insure safety. Rod stiffeners such as angle attached with seismic rod clamps (SRC) or strut channel attached with seismic rod clamps (UC) prevent suspended rods from buckling from vertical movements. Mason isolation hangers which have vertical limit stops should be used to minimize travel and reduce damage due to excessive acceleration. These vertical limit stops are standard on all Mason precompressed (PC-prefixed) isolation hangers.



SRC– Seismic Rod Clamp with Plated Nut and Bolt & Painted Clamp

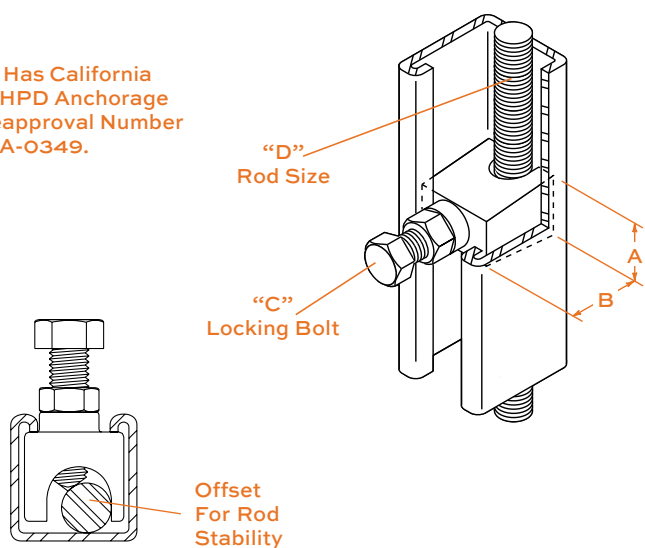


TYPE SRC DIMENSIONS

Type	Size	A		B		C	Acceptable Rod Sizes D	
		(in)	(mm)	(in)	(mm)		(in)	(mm)
SRC-	1	13/8	35	1/2	13	1 x 1 x 1/4	3/8 - 5/8	10 - 16
	1 1/2	13/4	44	5/8	16	1 1/2 x 1 1/2 x 1/4	3/8 - 1	10 - 25
	2	13/4	44	5/8	16	2 x 2 x 1/4	3/8 - 1 1/4	10 - 32

UC- Seismic Rod Clamp for Strut Channel

UC Has California OSHPD Anchorage Preapproval Number OPA-0349.



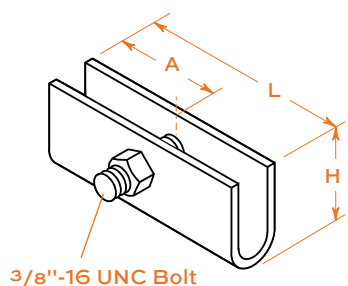
TYPE UC DIMENSIONS

Type	Size	A		B		C	Fits Rod Sizes D	
		(in)	(mm)	(in)	(mm)		(in)	(mm)
UC-	1	1	25	11/8	28	3/8"-16UNC	3/8 - 1/2	10 - 13
	2	1 1/4	32	1 1/8	28	1/2"-13UNC	5/8 - 3/4	16 - 19

CCB- Clevis Cross Brace

SINGLE BOLT CLEVIS CROSS BRACE

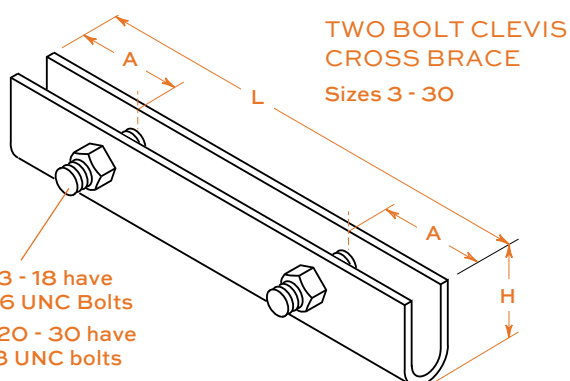
Sizes 1 1/2 - 2 1/2



CCB Has California OSHPD Anchorage Preapproval Number OPA-0349.

TYPE CCB DIMENSIONS

Type	Size	L		H		A	
		(in)	(mm)	(in)	(mm)	(in)	(mm)
CCB-	1 1/2	17/8	48	1	25	15/16	24
	2	23/8	60	1	25	13/16	30
	2 1/2	27/8	73	1 1/8	29	17/16	37
	3	31/2	89	1 1/8	29	3/4	19
	4	41/2	114	1 1/8	29	1	25
	5	59/16	141	1 5/16	33	1	25
	6	65/8	168	1 5/16	33	1 1/2	38
	8	85/8	219	1 7/16	37	2	51
	10	103/4	273	1 9/16	40	2 1/2	64
	12	123/4	324	1 9/16	40	3	76
	14	14	356	1 11/16	42	3 1/2	89
	16	16	406	1 7/8	48	4	102
	18	18	457	2	51	4 1/2	114
	20	20	508	2 1/2	64	5	127
	24	24	610	2 1/2	64	6	152
	30	30	762	2 1/2	64	7 1/2	191



Sizes 3 - 18 have 3/8"-16 UNC Bolts
 Sizes 20 - 30 have 1/2"-13 UNC bolts

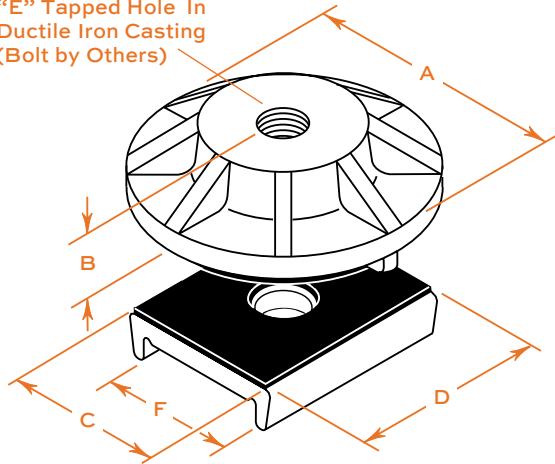
SEISMIC SWAY BRACE SYSTEM JOIST ATTACHMENT HARDWARE & LOAD DISTRIBUTION BRACKET

**JAH
& SLDB**

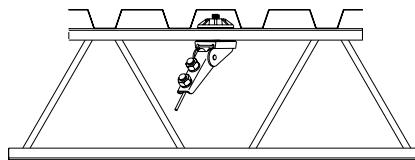
JAH- Joist Attachment Hardware

The JAH is used to attach solid or cable braces to the top cord of bar joists. Attachment to the lower cord is not recommended.

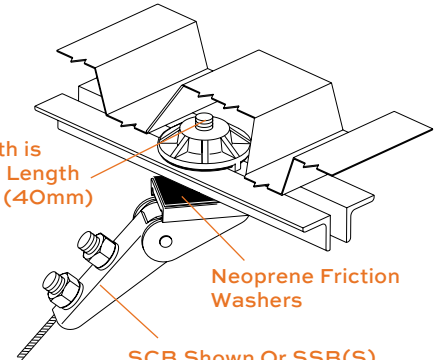
"E" Tapped Hole In Ductile Iron Casting (Bolt by Others)



SCB Attached to Top of Joist with JAH



Bolt Length is Angle Leg Length Plus 1 1/2" (40mm) Minimum



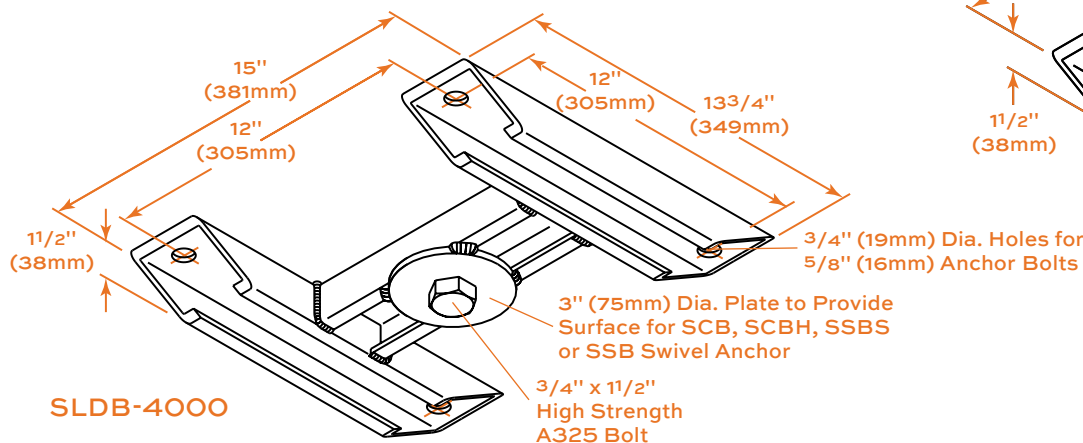
SCB Shown Or SSB(S) with Angle or Strut

TYPE JAH DIMENSIONS

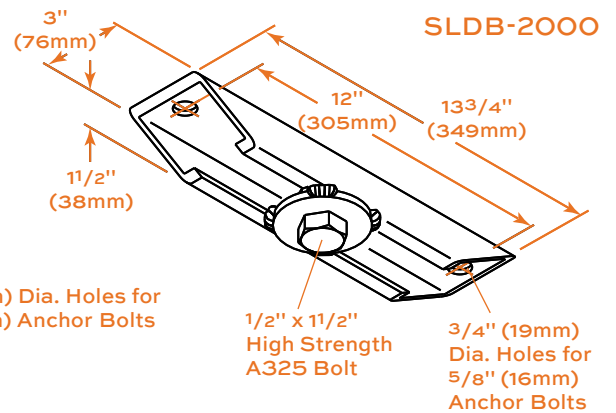
Type	Size	SCB, SSBS & SSB Sizes	A		B		C		D		E		F		Maximum Load					
			(in)	(mm)	(in)	(mm)	(in)	(mm)	(in)	(mm)	(in)	(mm)	(lb)	(kg)	(lb)	(kg)	(lb)	(kg)		
JAH-	0	SCB-0	3	76	3/4	19	17/8	48	13/4	44	3/8-16UNC	11/2	38	500	227	—	—	—	—	
	1	SCB-1	3	76	3/4	19	17/8	48	2 1/4	57	1/2-13UNC	11/2	38	975	442	—	—	—	—	
	2	SCB-2	3	76	3/4	19	2 1/8	54	3	76	5/8-11UNC	13/4	44	2050	930	—	—	—	—	
	3	SCB-3, SSBS-20, SSB-3	3	76	3/4	19	2 1/2	64	3 3/4	95	3/4-10UNC	2 1/8	55	3150	1429	3000	1361	5000	2268	

SLDB- Seismic Load Distribution Bracket

The SLDB is used to distribute the seismic load of solid or cable braces attached to a ceiling. SLDB may be manufactured with or without slots.



SLDB-4000



SLDB-2000

TYPE SLDB RATINGS

Type	Size	Capacity (lb)	Capacity (kg)
SLDB-	2000	2000	907
	4000	4000	1814

Ratings are from test data and calculations used to obtain California OSHPD Preapproval Number OPA-0349. Testing was supervised and certified by an independent engineer registered in the state of California.

SCB Attached to Ceiling with SLDB-4000

