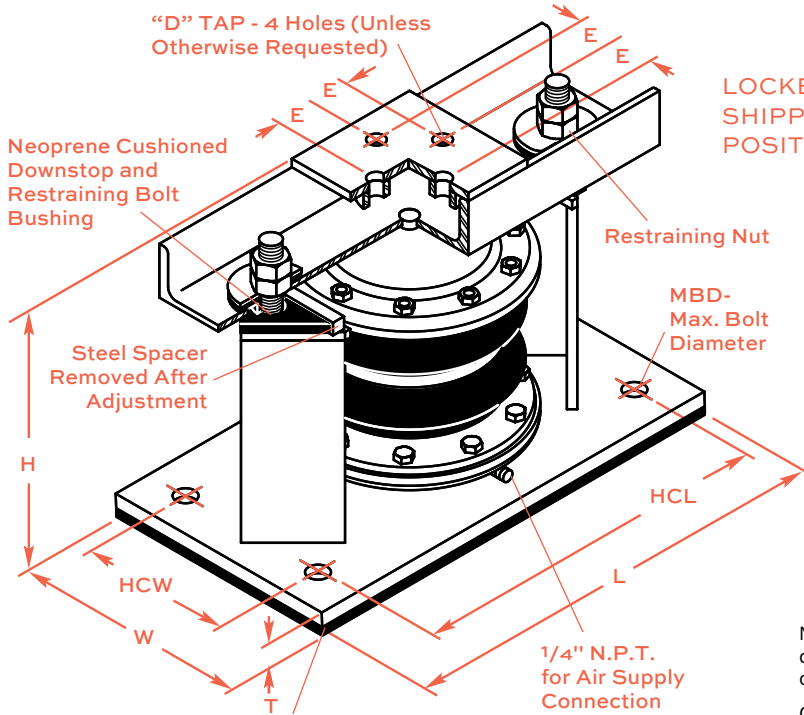


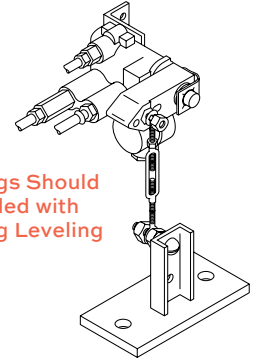
WELDED RESTRAINED TWIN SPHERE AIR SPRING MOUNTS

SLR-MT

SLR-MT



LOCKED SHIPPING POSITION



Air Springs Should Be Installed with Air Spring Leveling Valves

RELEASED INSTALLED POSITION

See Data Sheet DS-206 page 5•51 for the Two Types of Leveling Valves

NOTE: Air Springs should be selected for 80% of maximum capacity to allow for errors in published equipment weights or weight distribution.

Caution: Never inflate Air Springs prior to installation.

Non-Skid Neoprene Friction Pad— When Not Using for Seismic or Wind Resistance, Bolting to Floor is Not Necessary.

TYPE SLR-MT DIMENSIONS

Type & Size	D (in) (mm)	E (in) (mm)	H (in) (mm)	L (in) (mm)	T (in) (mm)	W (in) (mm)	HCL (in) (mm)	HCW (in) (mm)	MBD (in) (mm)
SLR-MT-3	3/4 19	13/8 35	10 254	13 330	1/2 13	7 178	11 280	4 1/2 114	5/8 16
SLR-MT-4	3/4 19	13/8 35	10 254	13 330	1/2 13	7 178	11 280	4 1/2 114	5/8 16
SLR-MT-6	3/4 19	13/8 35	10 254	17 432	5/8 16	10 254	15 380	7 178	5/8 16
SLR-MT-8	3/4 19	13/8 35	10 254	21 3/4 552	5/8 16	14 355	18 3/4 476	7 178	5/8 16

TYPE SLR-MT RATINGS

Type & Size	Minimum Load ¹		Maximum Recom. Load ²		Maximum Load ³		Approximate Frequency	
	(lb)	(kg)	(in) (mm)	(lb) (kg)	(lb) (kg)	CPM	Hz	
SLR-MT-3	345	155	1100 505	1375 625	138	2.3		
SLR-MT-4	540	245	1720 780	2150 980	120	2.0		
SLR-MT-6	1175	535	3760 1710	4700 2135	108	1.8		
SLR-MT-8	2120	960	6780 3080	8475 3850	102	1.8		

¹ Minimum Load at 25 psi (1.8 kg/cm²)

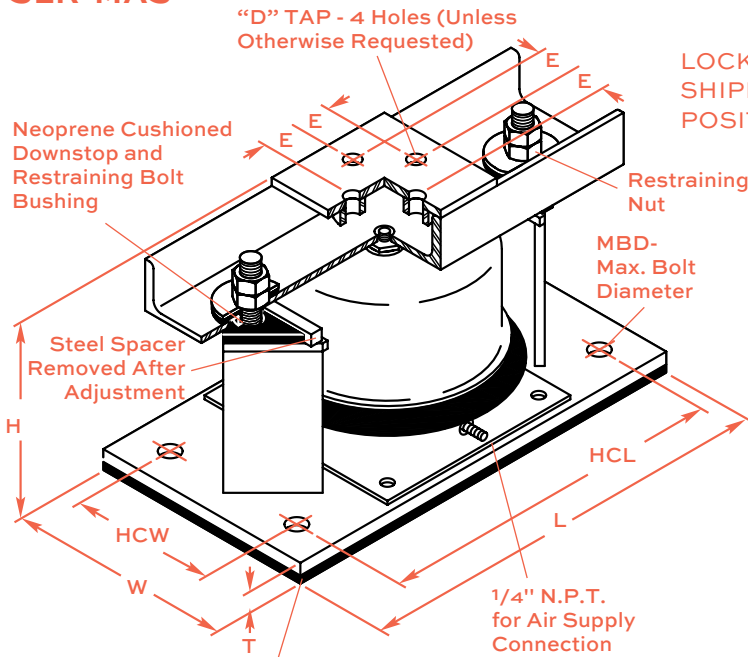
² Maximum Recommended Load at 80 psi (5.6 kg/cm²)

³ Maximum Load at 100 psi (7 kg/cm²)

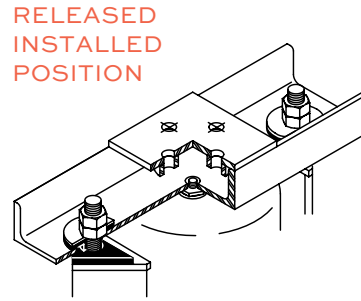
WELDED RESTRAINED ROLLING LOBE AIR SPRING MOUNTS

SLR-MAS

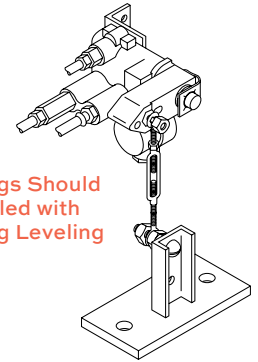
SLR-MAS



LOCKED SHIPPING POSITION



RELEASED INSTALLED POSITION



Air Springs Should Be Installed with Air Spring Leveling Valves

See Data Sheet DS-206 page 5-51 for the Two Types of Leveling Valves

Non-Skid Neoprene Friction Pad— When Not Using for Seismic or Wind Resistance, Bolting to Floor is Not Necessary

NOTE: Air Springs should be selected for 80% of maximum capacity to allow for errors in published equipment weights or weight distribution.

Caution: Never inflate Air Springs prior to installation.

TYPE SLR-MAS DIMENSIONS

Type & Size	D (in) (mm)		E (in) (mm)		H (in) (mm)		L (in) (mm)		T (in) (mm)		W (in) (mm)		HCL (in) (mm)		HCW (in) (mm)		MBD (in) (mm)	
SLR-MAS-3000	3/4	19	13/8	35	111/4	286	13	330	3/8	10	7	178	11	280	41/2	114	5/8	16
SLR-MAS-6800	3/4	19	13/8	35	111/4	286	17	432	1/2	13	10	254	15	380	7	178	5/8	16
SLR-MAS-12000	3/4	19	13/8	35	111/4	286	213/4	552	1/2	13	14	355	183/4	476	7	178	5/8	16

TYPE SLR-MAS RATINGS

Type & Size	Minimum Load ¹		Maximum Recom. Load ²		Maximum Load ³		Approximate Frequency	
	(lb)	(kg)	(in)	(mm)	(lb)	(kg)	CPM	Hz
SLR-MAS-3000	300	136	2400	1088	3000	1360	84	1.4
SLR-MAS-6800	680	309	5440	2472	6800	3090	84	1.4
SLR-MAS-12000	1200	545	9600	4360	12000	5455	78	1.4

¹ Minimum Load at 10 psi (0.7 kg/cm²)

² Maximum Recommended Load at 80 psi (5.6 kg/cm²)

³ Maximum Load at 100 psi (7 kg/cm²)